



## 15 Wimbleton Circuit Carseldine QLD

4 🛏 2 🚿 2 🚗

SOLD AFTER MULTIPLE OFFERS - THANK YOU FOR YOUR INTEREST

Lived in by only one couple since new, this well-cared-for home combines space and easy living with tiled living areas, as new carpeted bedrooms and lounge and low maintenance fully-fenced grounds.

Complete with 4 bedrooms, 2 bathrooms and separate living areas - including an oversized sunroom, the floorplan has the benefit of the master bedroom being separate to the other 3 bedrooms, with the 3 bedrooms surrounding the powder room/bathroom/toilet - all again separated for easy shared use.

**Type** : House  
**Price** : UNDER CONTRACT  
**Land Size** : 568 sqm  
**View** : <https://www.conwellproperty.com.au/sale/ql/city-north/carseldine/residential/house/8675808>

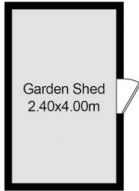
[For full version visit the website](https://www.conwellproperty.com.au)



**Donna Conwell**  
0412623655



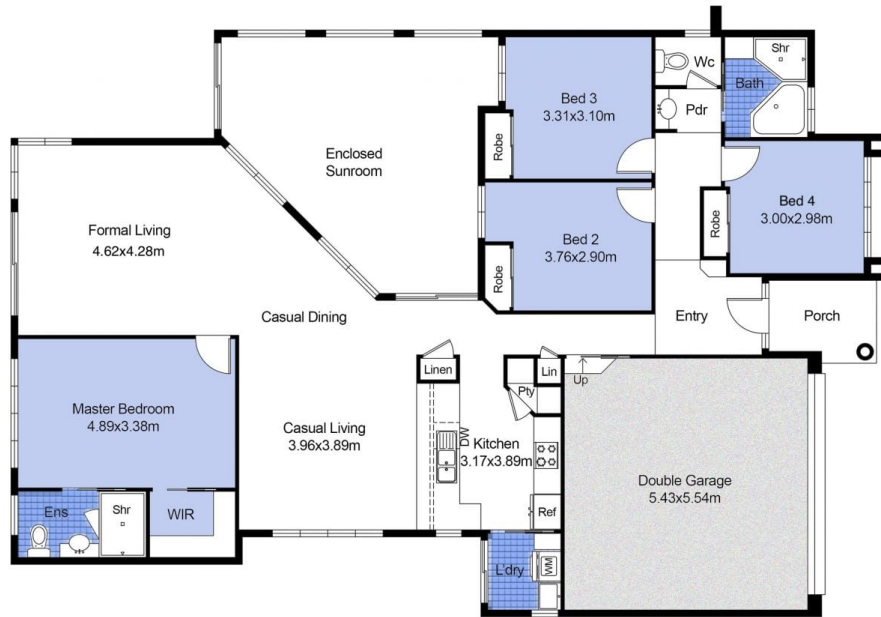
**Lucinda Conwell**  
0420677579



**Approximate Areas**

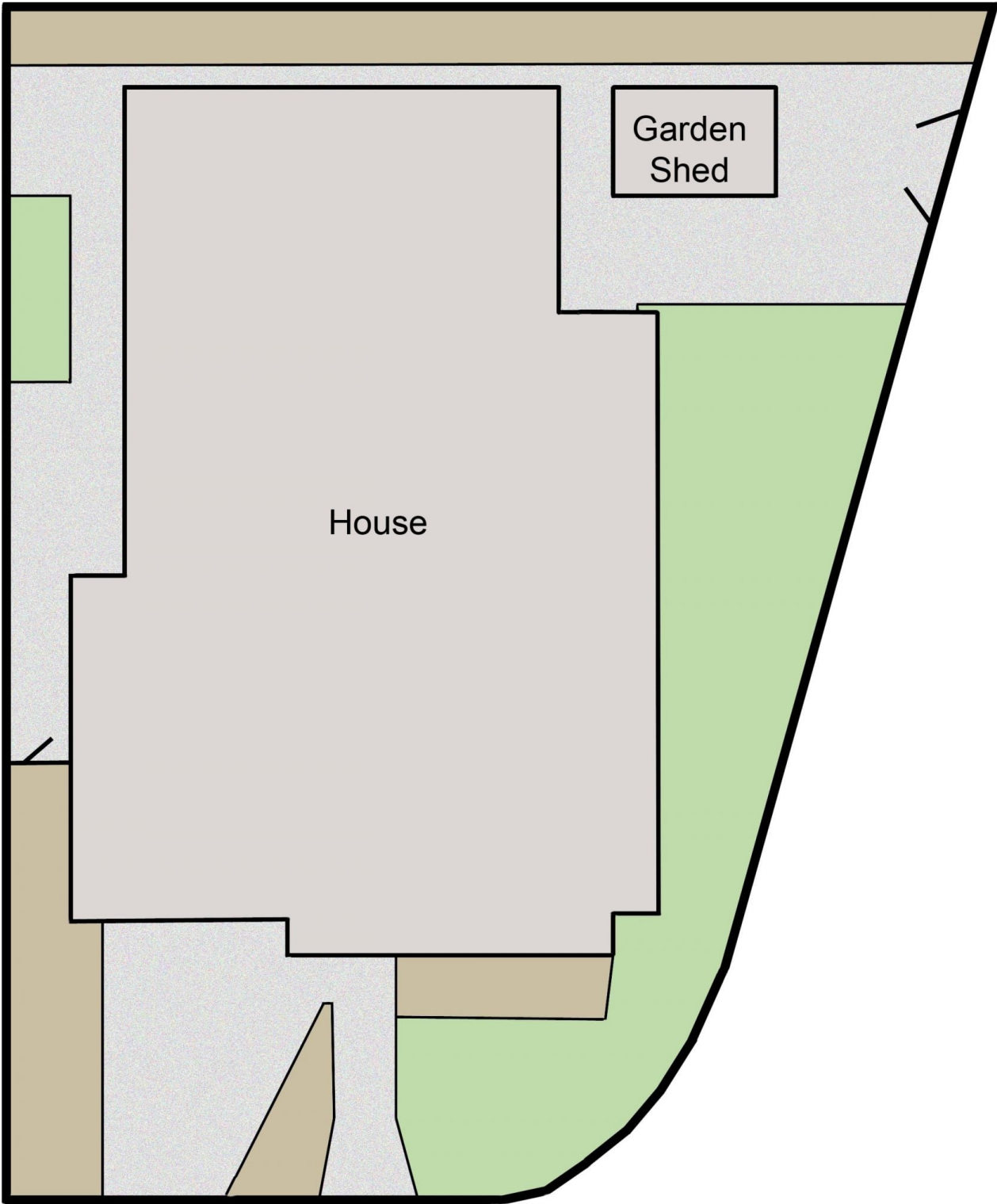
Internal: 179.1 m<sup>2</sup>  
 External: 13.3 m<sup>2</sup>  
 Garage: 33.5 m<sup>2</sup>  
 Shed: 9.6 m<sup>2</sup>  
 Total Area: 235.5 m<sup>2</sup>

This floor plan is intended as a guide only. Layout dimensions are approximate only. No representation or warranties of any nature whatsoever are given or intended. Any person using this information should rely on their own enquiries.



15 Wimbledon Cct CARSELDINE

Conwell Property



**15 Wimbledon Cct CARSELDINE**

**Conwell Property**